

## How Can I Get My Calcium Score?

Call Cardiovascular Medicine, P.C. No referral is needed and your test results will be sent to your family practice physician.



**Please call us today to schedule your appointment!**

**1.800.382.0707  
or direct  
563.888.0495**

## CALCIUM SCORING LOCATION

**1100 36th Avenue  
Moline, Illinois 61265  
(309) 743-6700**

**CVMEDPC.COM**

# **CVM**

Cardiovascular Medicine, P.C.

### **OUR MISSION**

*Cardiovascular Medicine P.C. will provide  
Compassionate, Comprehensive,  
Cardiovascular Care.*

# **CVM**

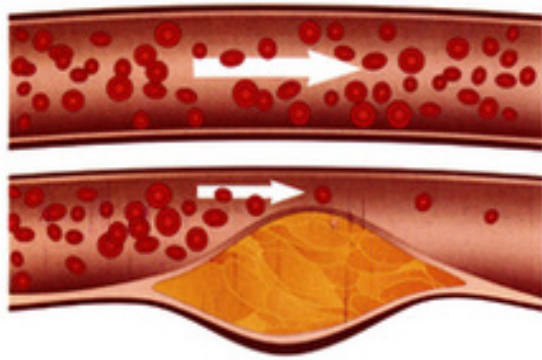
Cardiovascular Medicine, P.C.

## **ARE YOU AT RISK FOR A HEART ATTACK?**



## **CARDIAC CALCIUM SCORING**

Learn more about Cardiac Calcium Scoring options at Cardiovascular Medicine, P.C. Early detection could save your life!

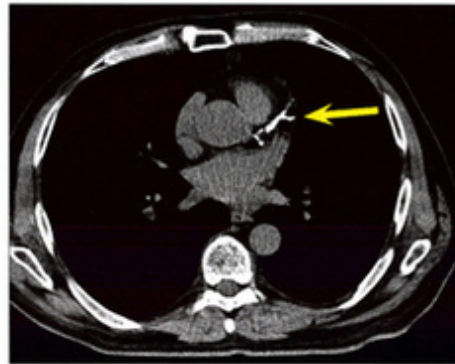


## What is Calcium Scoring?

Cardiac Calcium Scoring can detect heart disease at its earliest, most treatable stage. The presence of calcium in the coronary arteries is a proven marker for atherosclerosis; the hardening and clogging of arteries that leads to most heart attacks. Unfortunately, it hasn't always been easy to find until now. Cardiovascular Medicine, P.C. calcium scoring uses computed tomography (CT) technology to detect calcium deposits in the coronary arteries, often years before the development of symptoms.

## Why is Calcium Scoring Important?

Heart disease is a growing problem and is the number one killer of American's—both men and women. And, for 250,000 each year, a fatal heart attack is the first and only symptoms of the disease. Calcium Scoring provides quick answers, in seconds; the state-of-the-art scanner can produce an image of your coronary arteries, and the calcium that may lie inside. More importantly, the scanner produces a picture of your future risk for heart disease, while there's still time to do something about it!



## Who Can Benefit from a Calcium Scoring Exam?

Calcium Scoring is recommended for men over age 45 and women over age 55 who have risk factors for heart disease.

These include:

- High blood pressure
- High cholesterol
- Diabetes
- Smoking
- Family history of heart disease
- Over ideal body weight

*\*The exam is not for individuals who already have heart disease, or who have symptoms of heart disease such as chest pain or shortness of breath.*